

CGS 2545: Database Concepts Spring 2012

SQL In-class Exercises – Part 1 Basic SQL

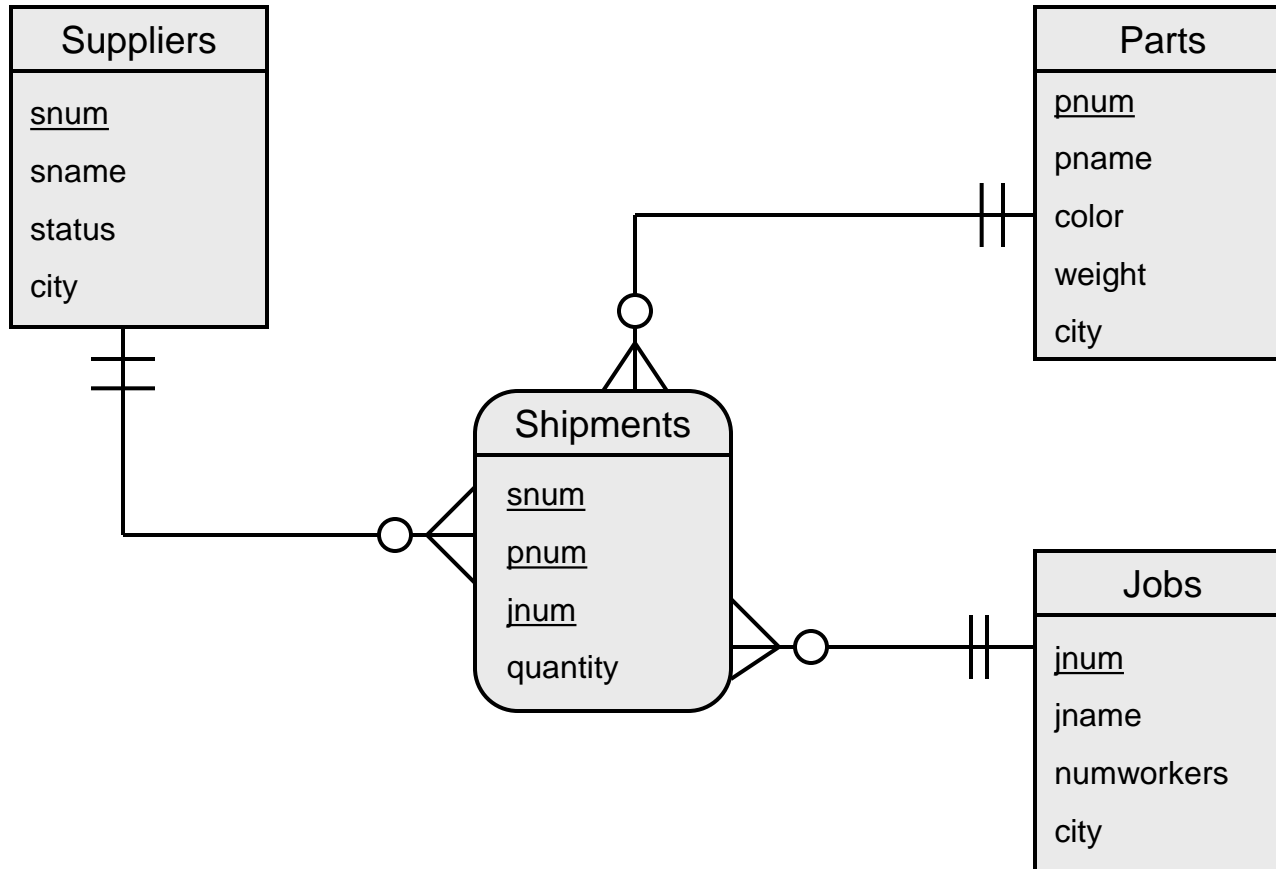
Instructor : Dr. Mark Llewellyn
markl@cs.ucf.edu
HEC 236, 407-823-2790
<http://www.cs.ucf.edu/courses/cgs2545/spr2012>

Department of Electrical Engineering and Computer Science
Computer Science Division
University of Central Florida



SQL In Class Exercises

- Use the following database scheme for problems 1-9 in this exercise.

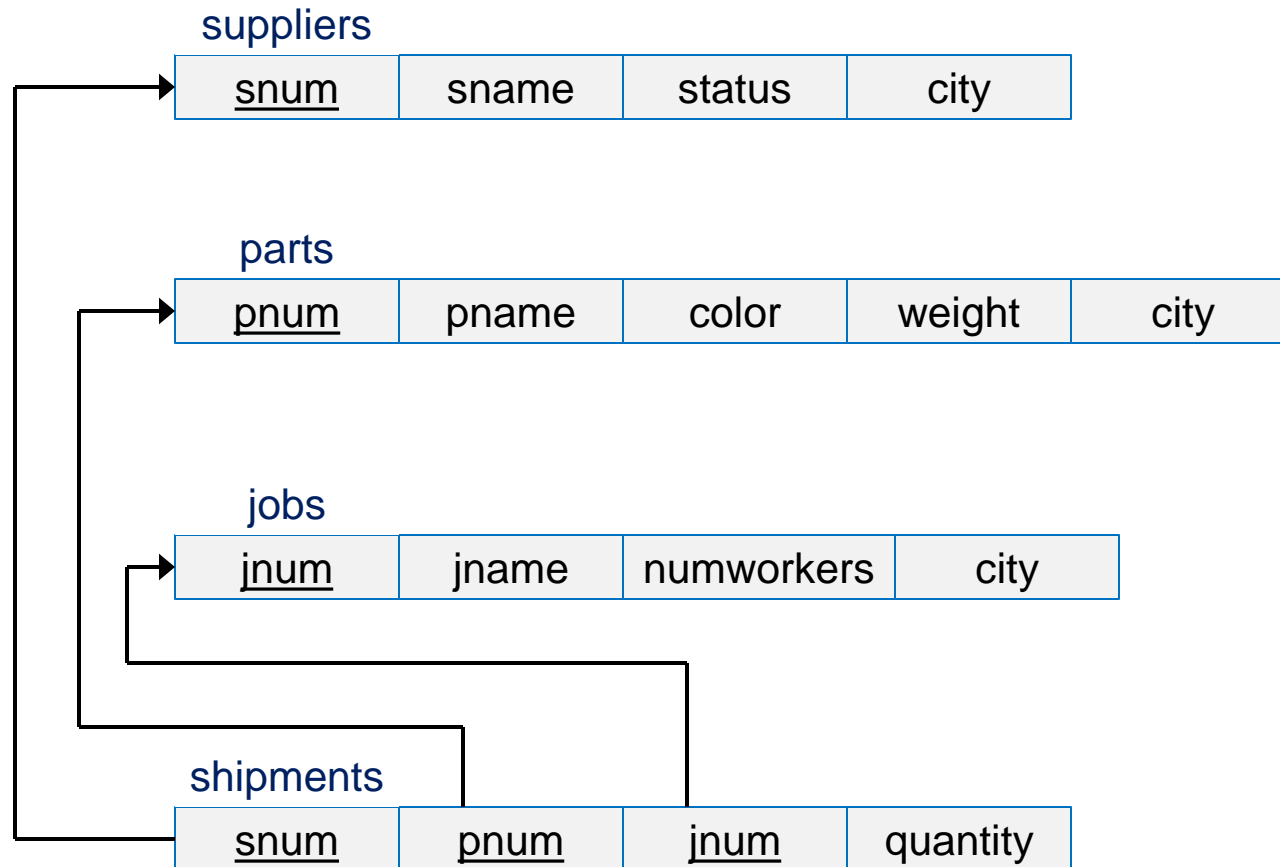


- Develop SQL expressions for each of the following queries:



SQL In Class Exercises

- The schema version of the database for problems 1-9.



1. Create the table definition for the suppliers schema. Do not allow a supplier's information to be deleted if they have a shipment.

Solution

```
CREATE TABLE suppliers
(snum VARCHAR2(5) NOT NULL,
sname VARCHAR2(25),
status INTEGER,
city VARCHAR2(20),
CONSTRAINT supplier_PK PRIMARY KEY (snum)
ON UPDATE RESTRICT);
```



2. Assuming that the tables for the parts and jobs were created in a similar fashion to that of the suppliers table on the previous page, create the table definition for the shipments schema.

Solution

```
CREATE TABLE shipments
(snum VARCHAR2(5) NOT NULL,
 pnum VARCHAR2(5) NOT NULL,
 jnum VARCHAR2(5) NOT NULL,
 quantity INTEGER,
CONSTRAINT ship_PK PRIMARY KEY (snum, pnum, jnum),
CONSTRAINT ship_FK1 FOREIGN KEY (snum) REFERENCES suppliers(snum),
CONSTRAINT ship_FK2 FOREIGN KEY (pnum) REFERENCES parts(pnum),
CONSTRAINT ship_FK3 FOREIGN KEY (jnum) REFERENCES jobs(jnum) );
```



3. Insert a new supplier's information into the suppliers table.

Solution

```
INSERT INTO suppliers VALUES  
("S1", "Kristy", 14, "Orlando");
```



4. Delete from the shipment table every row where the quantity is less than 10.

Solution

```
DELETE FROM shipments  
WHERE quantity < 10;
```



5. Update the suppliers table by modifying the status of every supplier whose current status is 10 by increasing the status by 5.

Solution

```
UPDATE suppliers  
    SET status = status + 5  
    WHERE status = 10;
```



6. Update the parts table by modifying the weight of part number 6 to its current weight + 20.

Solution

```
UPDATE parts
  SET weight = weight + 20
  WHERE pnum = 6;
```



7. Modify the data in the parts table so that every part that was blue is now colored green.

Solution

```
UPDATE parts
  SET color = "green"
  WHERE color = "blue";
```



8. List only the names of those suppliers who are located in Orlando.

Solution

```
SELECT sname  
FROM suppliers  
WHERE city = "Orlando";
```



9. List the part number for every part that is shipped by more than one supplier.

Solution

```
SELECT pnum  
FROM shipments  
GROUP BY pnum  
HAVING COUNT (snum) > 1;
```

WHERE clause restricts by rows
HAVING clause restricts by groups



10. Find the average weight of all parts.

Solution

```
SELECT AVG(weight)  
FROM parts;
```



11. For each part list the part number and the total quantity in which that part is shipped and order the results in descending order of the total quantity shipped. Name the total quantity shipped in the result as totalShipped.

Solution

```
SELECT pnum, SUM(quantity) AS totalShipped
FROM shipments
GROUP BY pnum
ORDER BY SUM(quantity) DESC;
```



12. List the supplier number and the total quantity of parts that supplier ships and group the results by supplier number in descending order of the total quantity supplied.

Solution

```
SELECT snum, sum(shipments.quantity)
       AS totalShipped
FROM shipments
GROUP BY snum
ORDER BY sum(quantity) DESC;
```

